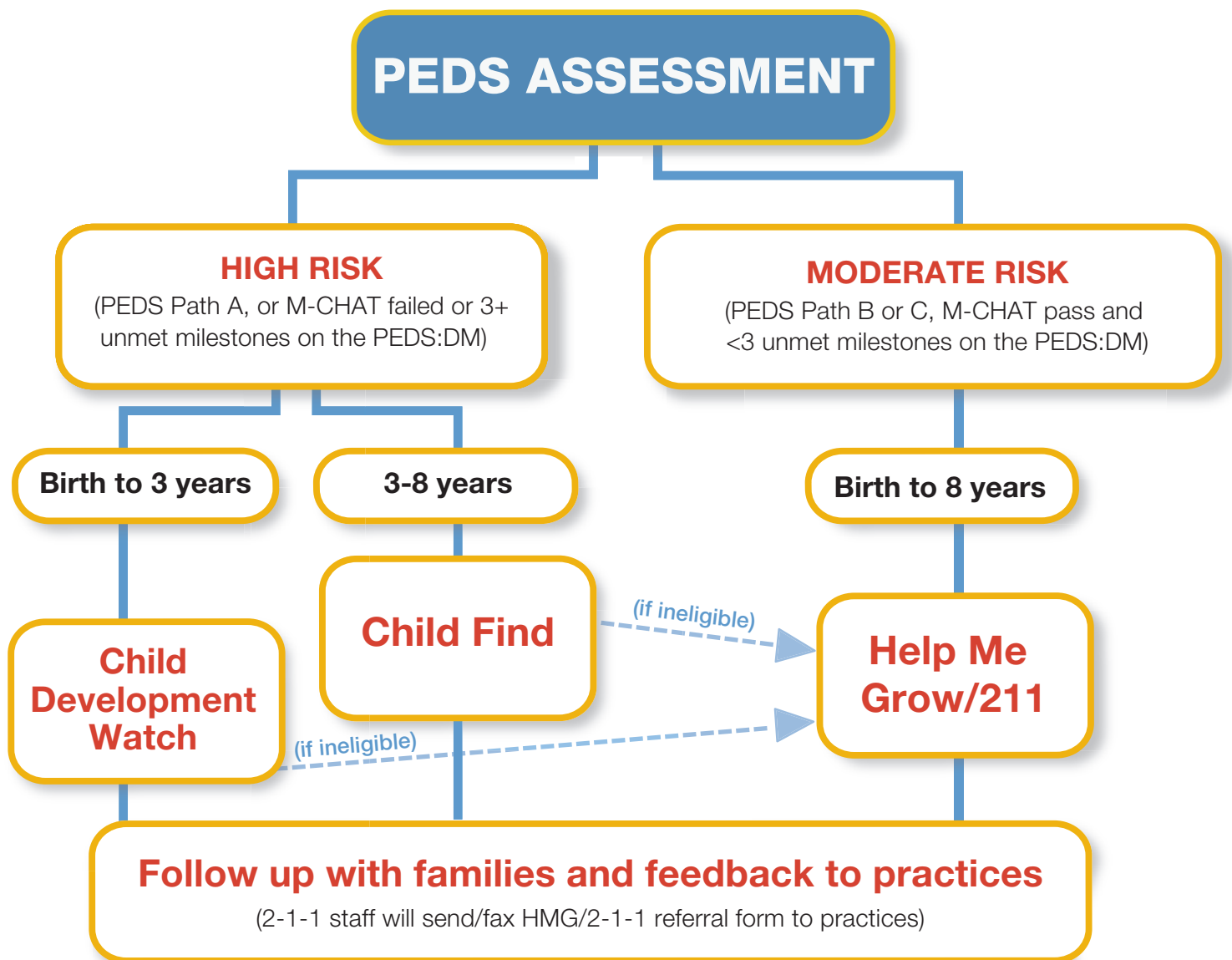


PEDS Online

Clinician Referral Flow Chart



This referral process and chart have been developed by the DPH Early Childhood Comprehensive Systems Program with input from all primary stakeholders.

For more information please call: 302-744-4922 or paulina.gyan@state.de.us

Child Development Watch evaluates and coordinates services for children with suspected developmental delays, birth to three years of age.

New Castle County 302-283-7140
Fax 302-283-7141
Kent/Sussex 302-424-7300
Fax 302-422-1363
Toll Free Calls 800-752-9393

Child Find identifies children three and older in need of special services in the school districts:

Dial 2-1-1 for school districts/contact information.

